

Clear Lake Trowel & Trellis Garden Club



Clear Lake Trowel & Trellis Garden Club (CLTTGC) is a member of Mendo-Lake District Garden Clubs, California Garden Clubs Inc (CGCI) and the National Garden Clubs Inc (NGCI). We were founded on September 21, 1955, by five women who wished to create and promote interest in amateur gardening in Lake County.

October 2011
Vol. 1, Issue 2



Officers:

President:

Helen Turley

Vice President:

Linda Waterstraat

Treasurer:

Ginny Cline

Secretary:

Jo Douville

Parliamentarian:

Jo Shaul

www.clttgc.org

Fall Planted /

Spring Blooming

Allium, Amaryllis,

Freesia, Hyacinth,

Calla, Narcissus,

Ranunculus, Tu-

lips, Watsonia,

See 'Crops in Pots'

on page 4 for win-

ter vegetable to

plant.

Thyme with President Helen

"Even if something is left undone, everyone must take time to sit still and watch the leaves turn." Elizabeth Lawrence

There is definitely a feeling of fall in the air. Elizabeth Lawrence must not have the same schedule as I do. I sometimes wish I had the time to follow her advice, though! In my case, I am fortunate to sit at my computer and overlook 12 walnut trees. In mid-September, I reflect on the fact that every single one of those leaves will turn gold and then flutter to the ground. Oh what beauty to behold! But once on the ground, they aren't always so beautiful are they?

Dealing with all the fall leaves can be an overwhelming task. I must remind myself that it is okay to allow some leaves to accumulate in plant beds, borders, and groundcovers. Sometimes I have to sacrifice aesthetics during the fall and winter seasons to protect the health and well being of my beloved garden when spring arrives. These not-so-attractive but hard-working leaves will decay and add nutrients to the soil and act as mulch and then, come spring, I'll be happy that I let Mother Nature do her job.

Here are some helpful hints to remember when dealing with leaves:

- ✎ Leaves can smother your lawn, so never allow them to accumulate on your grass.
- ✎ Remove leaves and debris under fruit and nut trees to help prevent peach leaf curl and blossom-end rot.
- ✎ Get rid of fallen camellia flowers to help prevent flower blight.
- ✎ Remember that snails, slugs, and earwigs like to winter in moist leaves, so if you have these pests, keep leaves raked up.
- ✎ "In the garden, Autumn is, indeed the crowning glory of the year, bringing us the fruition of months of thought and care and toil. And at no season, save perhaps in Daffodil time, do we get such superb colour effects as from August to November. Rose G. Kingsley, The Autumn Garden.

Hope you all have a glorious October but beware of those ghosts and goblins that will be prowling around on the 31st. *Happy Halloween everyone!*



TIME TO GO NATIVE by Jerry

California "The Land of Flowers" has over 5,000 species of native plants belonging to over 1,100 genera. With our semi-arid Mediterranean climate these plants over the ages have developed subtle differences that make them well suited for the local environment and have provided them with natural protection against indigenous pests and diseases. Lake County has been blessed with its fair share of native flora and selection of indigenous plants can better insure their successful growth in your landscape. Mixtures of California native annual and perennial seeds can be purchased in bulk for \$15-\$30 per pound and should be sown in late winter or early spring. Mixtures normally includes: California Poppies, Clarkias, Lupine, Baby Blue Eyes, and Five Spots. Soil preparation is not required.



Indigenous trees, shrubs and perennials should be transplanted after the first rains between the end of Novem-

ber and middle of March. Summer watering (1-inch per week) is recommended for the first two years. Deep irrigation with drip emitters with good drainage is a must. Never flood irrigate. During this period humus or slow release fertilizers may be used to accelerate growth. Rapid growth can shorten plant life. **By landscaping our yards with Lake county native flora we not only reduce maintenance costs, but we fulfill our obligation and responsibility to conserve and protect our natural resources.** When you think spectacular displays of colorful flowers, striking foliage and unlimited combinations of form and texture think about the fascinating world of Lake County native flora. Discover how rewarding it is to protect, conserve and beautify while you show that you love to garden.



ORNAMENTAL GRASS CARE

Never cut back ornamental grasses while green, as they are still harvesting energy to store in their roots. Grasses, browned by cold weather, add appeal to fall and winter gardens and need not be cut back unless they pose a fire hazard. In early March, cut them back to a few inches above the base. Be sure to divide ornamental grasses if they develop bare centers or outgrow their area—early spring is the best time to do this.



Green Thumbs Up

for the Nominating Committee. **Jo Jameson** accepted an appointment by President Helen. **Rena Clifton** and **Mary Ann Worth** were nominated from the floor. **Thank You Ladies!!!** This committee will be working on the 2012-2013 Officers and Chairmanships. Please let them know where you would like to serve.

SUNSHINE LADY Marva Brandt

Thinking of You

- ♥ Leanne Harvey
- ♥ Marva Brandt



NEW MEMBER by Leanne Harvey

Michelle Wisler

Continue watering lawns, trees, shrubs, vines and all new plantings until the rains come. Don't forget to water plants in sheltered areas. Well-watered plants survive freezing temperatures better than dry ones.

Award Book Deadlines:
December 1st, 2011
January 1st, 2012
See Jo Shaul or Mary Se-



September Meeting
MG Gabriel presenting
Master Gardener
Program

UC Davis Websites for Gardeners
type (http://_____.ucdavis.edu)
[homeorchard](#) (backyard orchard; [fruitsandnuts](#) (fruits & nuts);
[anrcatalog](#) (natural resources/catalog); [envhort](#) (environment);
[arboretum](#) (Arboretum); [ohric](#) (Ornamental); [vric](#) (vegetable research); [www.ipm](#) Integrated Pest Management); or [sarep](#) (Sustainable Ag).

OCTOBER FIELD TRIP:

Yerba Santa Goats Dairy

Our next field trip will be to the Yerba Santa Goat farm on Wednesday, Oct. 19th at 10am. The farm is located at 6850 Scotts Valley Rd. in Lakeport. Details to follow.

If you are interested in joining us, please let Linda Waterstraat know by Oct. 14 at lh20straat@yahoo.com or 707-245-4731.

WANTED:

Gardens to spotlight

Please teach us something about your yard/garden. Write a short article and take a picture that I can share in Trellis Talk's Spotlight-Garden of the Month. *Linda Pyers*

**ALL BOARD
MEMBERS &
CHAIRMEN
PLEASE ARRIVE
EARLY TO ATTEND
A
MEETING AT 11 AM.**



SPOTLIGHT-GARDEN OF THE MONTH: **Barbara and Jay Swanson**

About twelve years ago I acquired a bunch of eight feet long, thin Fruitless-Mulberry branches that had been trimmed from the tree and discarded. I stuck four branches into each of two large clay pots. Then I wired the two groups of branches together at the top to form an arch. I planted miniature-leaved ivy in each pot. It took several years for the ivy to grow all the way across the arch, but it was worth the wait.

The shelves under the arch hold my collection of Margaret Hudson clay critters. The plaque in the center of the arch was also made for us at the Margaret Hudson Studios.

On the patio table is a very lush Million Bells plant that was given to us the summer of 2010. We were told it would only last the one year but the plant had other ideas. It not only survived the several months of early morning freezes outside but it doubled in size.



September Field Trip:

Grace Hudson Museum in Ukiah

We had a good turn out for our first field trip of the year to the Grace Hudson Museum and Sun House in Ukiah. We were pleased to have several members of the Fort Bragg GC join us for the day.

After lunching on the patio, we were treated to a docent tour of the museum which features the impressive Pomo Indian portraits and landscapes painted by Hudson. We enjoyed the extensive collection of Pomo baskets and artifacts. Later we toured the adjacent Sun House, the Hudsons' charming 1911 redwood Craftsman bungalow home. The gardens are a work in progress. We were told they received a grant to develop a native plant garden on the grounds.



CROPS IN POTS

by Doris Ellsworth

Winter Vegetable Gardening in Containers



I have a reminder on my calendar to be sure and plant vegetables by the second week in October (the most opportune time temperature-wise and the ground is still warm)

All you need is 3 to 5 gal pots (5 gal for broccoli and Swiss chard), a couple bags of potting soil that already has fertilizer added, one plant per container. If the weather is still hot, protect by covering with something like shade cloth until roots establish. If you're restricted to only a couple of vegetables (they need to have sun), I'd suggest dark green leaf vegetables: Swiss Chard (red is best), Kale, Collards, and Broccoli (the leaves have the most nutrition).

Kale is even better tasting after a 'kiss of frost'. Favorite Kales: 'Toscana' and 'Lacinato'. After the plant gets larger, start harvesting the outer green leaves only, not the whole plant. This way you have continued growth and plenty of leaves to harvest. Leaves can be mixed together and steamed or used in soups, stews, etc.

Containers of mixed lettuces (some shade) can be harvested one leaf at a time or with scissors cut 1" above soil and it will re-grow one or two more heads.

Celery is also very useful, though it doesn't produce a finished product head. Any time you need celery flavor for soups and stews, it's right there for you in leaf form.

If you have a sunny wall, you can grow sugar snap peas by making a trellis (heavy string will work).

These are great producers and delicious, pod and all-raw. I grow sweet peas in front of the sugar snap peas. The sweet peas use the sugar snap pea vines for support when in bloom.



Pot-up herbs and bring inside near a sunny window. I especially use a lot of parsley and different chives. Do not let any of them bloom as this will affect flavor. Basil will keep a couple weeks in a water vase in the refrigerator. You can freeze basil either as a pesto or whirled in a blender with enough water to make a thick sauce. I then put sauce in ice cubes to freeze / then bag up.

Lots and lots of other vegetables grow best in cool weather if you have the room and sun.

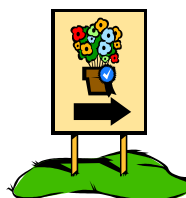


ing!

Happy Winter Garden-Doris Ellsworth.

"Tickle the earth with a hoe, it will laugh a harvest"

Unknown Author



UKIAH GARDEN CLUB
Oct 1st, 2011
PLANT SALE
8:30AM-12:00PM

NORTH LAKE GARDEN CLUB
FIELD TRIP
Sign-ups for trip to San Francisco
November 3rd, \$50.
Call Sharon Thorne 972-6025



**BEST
OF
SHOW!**

**Garden Club
Fair Exhibit**

Chrysanthemum Show – FRIDAY, NOV 4, 2011

"MUM IS THE WORD"

It was 48 years ago I attended my first "Mum" Show, coming back to Scotts Valley Road and given a ticket by my neighbor Helen Rickabaugh. It was quite the flower extravaganza.

This year we too can enjoy the beauty of one of nature's flower queens the Chrysanthemum of many faces.

The past three years we have again had a lovely show on a different level from the official Standard Show, but again showing garden's glory and our creativity. This show has just evolved by everyone doing something whether asked or not. I am allergic to sign up sheets, so again it is my hope that you will all come together and do what you like best. There are some jobs that are not as much fun, but some of you have done them to make us all look good.

Arrangement Names – you can use the same too!

RESCUE – Shirley Estrem

TOGETHER – Shirley Estrem

So – what needs to be done?????

Find your Word, or Words for an arrangement — all are welcome along with KABATIN

Growers of Specimens – yes, all are invited – Official names and type are helpful

Name Labels will be made by Shirley Estrem

SEND NAMES AT LEAST THREE DAYS BEFORE THE SHOW TO: snwestrem@gmail.com
- if no e-mail, call 263-5157.

Publicity --- Claire Grieve

White Tablecloths --- Shirley Estrem

Key Pick up ---

Set Up - Heavy Work - 8 a.m. with tables & chairs ---

Set Up - 9a.m. to 12:00 - arrangements & specimens --

Entry Way Welcome ---

Welcome Table Sign In Table ---

Tea Plates and Cups (clubhouse collect) ---

Cookies or Goodies ---

Buying Cider (at clubs expense) ---

Crock Pot and Ladle --- did we have 2? ---

Kitchen Queen ---

Clean Up – mop up ---



*July Planning Meeting
(not everyone is pictured)*

Lake Ka-Ba-Tin Redbud
Flower Arrangers—
Traditional Line Design

TREE COUNT

Every time you plant a tree,
Leanne Harvey
needs to know. Please
fill-in the chart or give
her a call.



WREATH MAKING - Makes Funds and Friends!

We'll start sign-ups for wreaths and for our wreath making at the October meeting. Order forms will also be available. We will have 150 @ \$20 each to sell and a few more than that to make as members get their "bonus for helping discount" for their personal wreath (\$3).

- Bow making will be at Barbara Swanson's house on Nov 10 at 9 AM, 1273 20th Street, Lakeport
- Workers will also be needed for Set-up on Nov 29th Bachelor Valley Grange, 9355 Government St, Upper Lake.
- Wreath making dates will be Nov 30, Dec 1 & Dec 2 with clean-up following, 9355 Government St, Upper Lake.
- Cutting and delivering fresh greens will be an essential part of the process.

These funds will pay for our scholarship, community beautification or gardens and/or education. Each member plays an essential part in this, our biggest fund raiser of the year.

I have great sub-committee chairs, but as this is my first time as the chair, "THE BUCK STOPS HERE PERSON," I will need everyone's help to make this a big success.

Please check your calendars, and be ready for fun! *Leanne*

Clear Lake Trowel & Trellis Garden Club

Return mail: Pres Helen Turley
PO Box 1903, Lakeport, CA 95453-1903

The club meets at 12:00 pm
on the 3rd Tuesday of the month.
Scott's Valley Women's Club House
2298 Hendricks Road
Lakeport, CA 95453

Garden Club Affiliates

- **National Garden Clubs, Inc.**
(www.gardenclub.org)
National President: Shirley S Nicolai
- **Pacific Region**
DHinchey@alaska.com
Director: Debbie Hinchey
- **California Garden Club, Inc.**
(www.CaliforniaGardenClubs.org)
President: Julie West
- **Mendo-Lake District Garden Club**
(www.mendolakegardenclub.org)
District Director: Virginia Stranske



Every Year a New Beginning!



Forget-me-nots

October 2011

- 4 10:30am (Tues) Garden Therapy-**
Clearlake
- 6 10:30am (Thur) Garden Therapy-**
Lucerne
- 11 Lake Ka-Ba-Tin Redbud Flower Arrang-**
ers
Theme: Traditional Line Design
10:00am (Tues), St John's Episcopal
Church
- 18 Regular Club Meeting**
Hostesses: Diane N, Sue G-N, Jan K
11:00am Board Meeting
12:00pm Social Time
12:30pm Flower Roll Call
1:00pm Regular Club Meeting
2:00pm Program: Esther Oertel
(Veggie Girl)-

'COOKING WITH HERBS'

- 19 Field Trip: Yerba Santa Goat-farm**
- 21 11:00am (Fri) Redwood Arrangers-**
Ukiah
- 26 *Happy Birthday Mary Secord!***
- 26 Mendo-Lake Dist-**
Fall General Meeting-Willits
- Oct Landscape Design Study School**
(see Yearbook or CGCI web site for
more information)

Additions or Corrections to Yearbook
—Bow Making will be at Barbara Swanson's on
November 10th at 9am.
—Chrysanthemum Show will be from 1-5pm.

*Deadline for newsletter articles
is the fourth Tuesday of each month.*