

# Clear Lake Trowel & Trellis Garden Club



Clear Lake Trowel & Trellis Garden Club (CLTTGC) is a member of Mendo-Lake District Garden Clubs, California Garden Clubs Inc. (CGCI) and the National Garden Clubs Inc. (NGCI). We were founded on September 21, 1955, by five women who wished to create and promote interest in amateur gardening in Lake County.

December, 2016  
Issue 4



## 2016-17 Officers:

### President:

[Dana Benjamin](#)

### Vice President:

[Debra Watson](#)

### Maureen Braiser

### Treasurer:

[Nora Gerrard](#)

### Secretary:

[Kathy Steinberg](#)

### Parliamentarian:

[Nancy Benkelman](#)



See us on Facebook

In Mexico, the poinsettia is called *flor de la Nochebuena* flower of the Holy Night. At Christmastime, the flower blooms & flourishes, the quite exquisite red stars lighting up the countryside. A Mexican legend tells how the poinsettia came to be, through a little girl's unselfish gift to the Christ Child.

## THYME WITH PRESIDENT DANA

December is a month of celebration, traditions, family and friends! Contemplating the question as to why we have Christmas Trees, Wreaths, Holly and Ivy with the Holiday season, I decided to do some research and share the meaning of these traditions with you! Our plants, both decorative and medicinal, have always played such an important role in our lives from the beginning of time.

The Christmas Tree, or evergreen fir tree, has been used to traditionally celebrate winter festivals, both Pagan and Christian. Pagans used



branches of the fir trees to decorate their homes during the winter solstice, as it made them think of the spring to come. The Romans used Fir Trees to decorate their temples at the festival of Saturnalia. It was a sign of everlasting life with God. The use of Christmas Trees probably began about 1000 years ago, in Northern Europe. Queen Victoria and Prince Albert made it a very popular practice and tradition during the Victorian Era!

The Christmas Wreath, one of our most cherished Christmas decorations, adorns our doors and mantels at Christmas time. Looking at the ancient Celts of Europe, Christmas was celebrated in those times as the Winter Solstice. The main reason for celebration was the return of the sun or the birth of a god. One of the many decorations the early Celts used was boughs of holly. The circular form of the Christmas wreath is believed to originate from the wreaths of "Coronas" that ancient Romans wore on their heads during festivals to honor warriors after going into arduous battles. Golden Wreaths, or Coronas, were worn only by royalty to commemorate the Roman Gods. If you are Christian, the wreath is said to represent the coming of Christ. If you are a Pagan and celebrate Yule the Christmas Wreath represents the idea of eternity or divinity.



Ivy, a plant that is closely associated with Christmas, was held in high esteem by the Greeks and Romans. It is a symbol of fidelity and love because of its clinging nature and is also an emblem of fertility. It was also seen as a protection from evil forces. Many old churches are covered in Ivy on the outside. Ivy & its symbolism is found in both Pagan & Christian cultures. To avoid persecution during the Roman pagan festival of Saturnalis, the early Christians used Holly to deck their halls. As Christian numbers increased and their customs prevailed, Holly and Mistletoe lost their Pagan associations and became symbols of Christmas. Romans gave one another wreaths of Holly. Druids believed that Holly, with its shiny leaves and red berries, stayed green to keep the earth beautiful when the sacred Oak lost its leaves. They wore sprigs of Holly in their hair when they went into the forest to watch their priests cut the sacred Mistletoe. Holly stands for peace and joy. Arguments are to be settled under a Holly Tree!

I hope you have enjoyed this short history on some of our most beloved traditions & plants that enrich our lives and make our gardens and homes beautiful. *I wish everyone a most wonderful Holiday Season!*



Dana DiRicco-Benjamin

Joyce Porterfield  
 Marva Brandt  
 Jo Shaul  
 Ginny Cline  
 Dana DiRicco-Benjamin



# WELCOME

APRIL BENNET-LANEE  
 CHERIE & MR LOWE

**CONGRATULATIONS!** *Bill and Shirley Estrem*  
 November 11, 1962 Bill and Shirley have been together 54 years! They met 4 years earlier. Bill was a pear inspector at Ed Seely's pear shed during his summers while going to Stanford. Shirley was a teacher and many school teachers were inspectors.



Shirley says, "We met over a pear box – the farmer's daughter..."

Then a new story!



## Christmas Luncheon December 13th Tuesday at noon

Riviera Hills Restaurant  
 10200 Fairway Dr, Kelseyville

\$22

(includes lunch choice, salad,  
 bread & butter, dessert, coffee or tea  
 and tax & tip)



Send check and meal selection  
 to Betty Atwood by December 6th.

- 1) *Chicken Marsala*
- 2) *Pasta Primavera (vegan)*



## Garden Therapy with Michelle

### OAK GALLS (Nancy Benkelman)

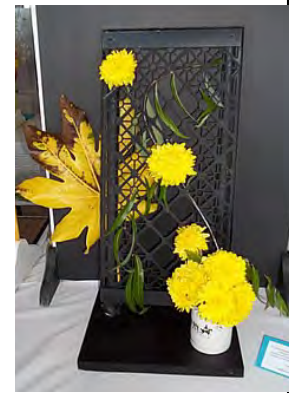


(Round ball-type growths lying on the ground near oak trees). These are the result of a cynipid wasp ovipositing eggs on the branch of an oak; the larvae feed on the nutrients in the bark; as the larvae feed, they secrete a substance which stimulates the tree into producing the galls. The galls provide food for the larvae that mature into wasps and then tunnel their way through the gall to freedom. The oak tree is not harmed. 2001 California State Parks –Docent Manual.





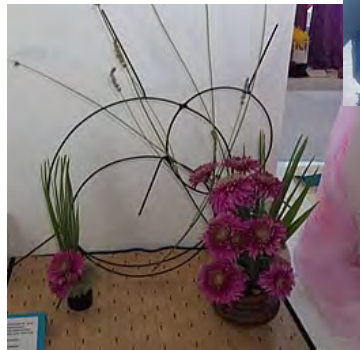
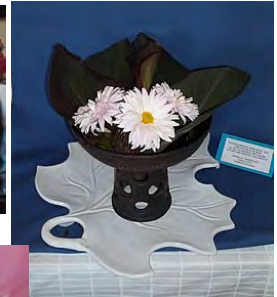
“FLOWER FRIENDS WITH MUM – 2016” was a great show living up to its name on November 4, 2016 at the sunny lakeshore Yacht Clubhouse. **Jo Shaul** again graced the Welcome Table as nearly 100 signed in. Jo also had a donation basket for the Club activities. **Many members** brought cookies and goodies which were served by our **Kitchen Queens Diane and Sue**. It was a beautiful floral display of the gardens and creativity of CLTTGC and the Ka-Ba-Tin Redbud Arrangers.



It all starts in the dirt! Our flower “Mum” always said, “It takes a lot of work to have a little fun.” So a big thank you goes to the growers who shared their flowers and greens with each other: Leanne Harvey, Barbara Swanson, Joyce Porterfield, Susan Buckles, Linda Pyers, Evy Escalante and Irene Didescu.



A big thank you go to Pam and Bill Held, as they brought their long tables to the clubhouse after Barbara picked up the key and found the tables there were all new and round. The set-up of the different placement turned out very well with the early morning crew of the Harvey & Porterfield team.



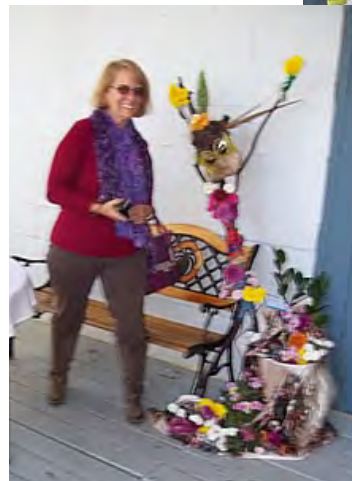
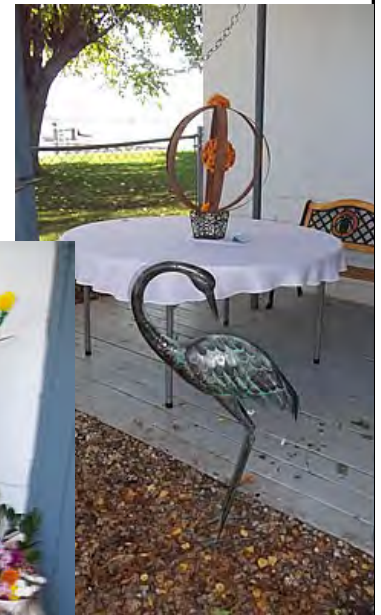
The arrangements were Creative with a *capitol C*, starting at the entrance with Leanne's "Manzanita Mum" and sculptural, Hanging, & Mobile Arrangement, "One World – Kindness Revolves and Returns". Each arrangement in the show was again a flower creation. **Our arrangers this year: Barbara Swanson, Joyce Porterfield, Leanne Harvey, Leslie Jones, Kathy Steinberg, Linda Pyers, Claire Grieve, Ann Blue, Evy Escalante, Sharon Reeves, Susan Buckles, Jo Shaul, Jo Jameson, Nancy Benkelman, and Shirley Estrem. We missed Michelle, Marva, and Irene.**





The designs were all happy and creative and I could exclaim about each one, but there would not be enough room for that in the newsletter so you will just have to look at these pictures that Linda and Barbara took in the newsletter here or on our web page CLTCG.org.

Claire also brought her scrapbook from the first show of the different flowers and types and arrangements made then. There were other scrapbooks of some of the former Mum Shows; the first being "Dance of the Mums". So now the "Flower Friends" can enjoy our success and plan the next bloom extravaganza.





## Green Thumbs Up



To Shirley Estrem for all the work on the Mum Show, making it another wonderful success. She brings all the white table clothes, makes the identification cards, contacts people, arranges the placement of each arrangement, and much more.

Shirley says, "I do feel very happy the way it all turned about —after the beginning set-up, and changing gears, I really like the new set up. I already have new placement ideas to open things up by placing center-pieces or duo's on the front table with no backdrops. Anyway - loved all the new blooms of my favorites - Luxor, Symphony, and Lola. Maybe next year we can have a specimen section again. Thanks again, Shirley.



Editor's Note: Thank you to Barbara Swanson (and Jay) for sharing their Mum pictures. A lot of mine were blurry, so thank you.



**RIP**  
**Pat Hopper**  
May 22, 1929-Oct 25, 2016  
Former member & friend  
of CLTGC.



Lower Lake Elementary School has been busy planting winter crops. Many brassicas including broccoli, cauliflower, kale & cabbages are growing. Lisa Rogers and the kids also have radishes, carrots, onion, garlic, lettuce & more. They are quickly running out of space and looking forward to expanding the garden after the damaged/burnt classrooms are replaced.



Lisa Rogers gave us a tour of the grounds where the fire came up to the buildings before the children arrived (this being a sensitive subject). We saw their raised beds filled with winter veggies.



The children gave us a round of applause, a thank you banner, and a paper flower with their individual 'Thank You's'. Today, they painted rocks with words like, 'PEACE' and 'BE KIND'. They will place the rocks randomly in parks and walkways for others to enjoy.

# Clear Lake Trowel & Trellis Garden Club

www.clttgc.org

Return mail: President Dana DiRicco-Benjamin  
10940 Elk Mt Road, Upper Lake, CA 95485



The club meets at 12:00 pm  
on the 3rd Tuesday of the month.  
Scott's Valley Women's Club House  
2298 Hendricks Road in Lakeport

## Garden Club Affiliates

- **National Garden Clubs, Inc.**  
([www.gardenclub.org](http://www.gardenclub.org))
- **Pacific Region**  
([www.pacificregiongardenclubs.org](http://www.pacificregiongardenclubs.org))
- **California Garden Club, Inc.**  
([www.californiagardenclubs.org](http://www.californiagardenclubs.org))
- **Mendo-Lake District Garden Club**  
([www.mendolakedistrict.org](http://www.mendolakedistrict.org))  
District Director: Gary Bodensteiner  
Assistant Director: Rhea Pitchard



# Forget-me-nots

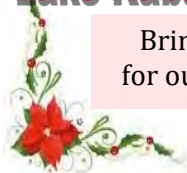
## DECEMBER 2016



Nov-Dec Mendocino Botanical Garden  
11/21-12/19 Mushroom Walk  
11/25-12/18 Festival of Lights  
(see Website of information)

## Lake Kabatin Redbud Arrangers

Bring Table Centerpieces  
for our Christmas Luncheon



12/13 CLTTGC Christmas Luncheon  
Riviera Hills Restaurant  
10200 Fairway Way  
Kelseyville  
NOON



# Merry Christmas

# Happy New Year

Deadline for newsletter is the fourth Tuesday of the month (Tuesday following meeting date).